

*The Society of*  
***St. Vincent de Paul***  
*in the City of Coeur d'Alene*

2001 Annual Report

*Committed to helping others help themselves!*

# St. Vincent de Paul

---

## MISSION

The Society of St. Vincent de Paul is a worldwide charity organization consisting of independent, self-governing, non-profit agencies. St. Vincent de Paul (1580-1660), believed that only love for our fellow man could open the way to a new and better world. It is in this spirit that we pursue our mission to be a good neighbor, lending a friendly hand when help is needed.

Coeur d'Alene's St. Vincent de Paul was established in 1946. Whether it's shelter, clothing, food, outreach, or the location of a convenient place to recycle — we're here to help and serve.

## TABLE OF CONTENTS

Page 1	Message from the President & Executive Director
Page 2 - 5	The Projects & Programs
Page 6 - 7	The People
Page 8	Statement of Financial Position
Page 9	Statement of Activities

Financial Statement prepared by  
Magnuson, McHugh & Company, P.A.  
Published by Commercial Printing  
Designed by Shelly Hines

Printing donated in part by Commercial Printing

Printed on recycled paper 

## ST. THOMAS CONFERENCE

John O'Brien ..... President  
Jane Graybill ..... Vice President  
Pat Covill ..... Secretary  
Mike Anderson ..... Treasurer  
Father Rassley ..... Spiritual Advisor

## MEMBERS

Kathy Beechler	Zoell McKenzie
Phil Dreisbach	Dick Nimitz
Gerald McDevitt	Kathryn Tacke

## EXECUTIVE BOARD

Mike Anderson	John O'Brien
Phil Dreisbach	Kathryn Tacke
Jane Graybill	

## HOUSING BOARD

John Albee	John O'Brien
John Bruning	Tom Taggart
Phil Dreisbach	

## STORE BOARD

Tim Brophy	Milt Schauble
Gretchen May	Kathryn Tacke
Zoell McKenzie	Bill Willis
John O'Brien	

## ART ON THE EDGE BOARD

Kathy Beechler	Dianne Munkittrick
Cheryl Burchell	Nancy Schilling
Kris McIlvenna	Linda Seed

Executive Director ..... Lynn Peterson  
Social Service Director ..... Kathy Reed  
Transitional Housing Director ..... Sharlee Mikelson  
Housing Director ..... Linda Elder  
Housing Developer/Grant Writer..... Shelly Hines  
Child Care Food Program  
Director ..... Deanna Jeffres  
Art on the Edge Director ..... Ali Shute  
X-plor Director ..... Bob Mathers  
Fiscal Officer ..... Aleta Forsberg  
Cd'A Store Manager ..... Margaret Lightfoot  
Cd'A Assistant Store Manager ..... Earl Koester  
Post Falls Store Manager ..... Jean Mitzemberg  
2001 Americorps VISTAs ..... Liz Beechler  
Kim Hite  
Ami Manning

# *St. Vincent de Paul*

---

## 2001 Annual Report

### *A MESSAGE FROM THE PRESIDENT...*

To those of you reading this annual report, thank you for your interest in the St. Vincent de Paul Society. Even a cursory review of this report will reveal the numerous ways in which our Society benefits the need of this area.

The successes we have achieved would not have been possible without the contributions of many people. My thanks and appreciation to our many donors, employees, volunteers, and patrons. Your continuing support enables us to continue to serve those in need in the community.

John O'Brien  
President

*~ and ~*

### *A MESSAGE FROM THE EXECUTIVE DIRECTOR...*

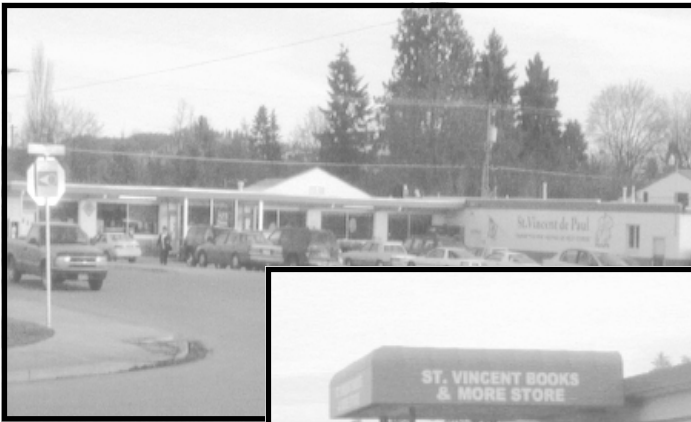
2001 was another busy year. We were able to expand our affordable housing program by purchasing a eight-unit Rural Development rental property in Post Falls for low-income families. We then purchased the eleven-unit Star Motel in Coeur d'Alene, to be used as transitional housing for single men and women, as well as families with children. A twelve-unit apartment complex in Wallace was also donated to us which we use as transitional housing for singles and families as well. This has allowed us to continue with our commitment to end the cycle of homelessness and hopelessness in people's lives.

Lynn Peterson  
Executive Director

Again, a warm thank you to all the people and businesses in our community who have helped make St. Vincent de Paul what it is today. Your donated time, money, and goods has allowed us to continue serving those in need in the North Idaho area.

# St. Vincent de Paul

## The Projects & Programs



Coeur d'Alene Thrift Store, Top

Post Falls Books & More Store, Right



St. Vincent de Paul is a non-profit organization that has been helping low and very-low income families in Northern Idaho since 1946. Originally a thrift store in Coeur d'Alene, we were able to help the less fortunate with free and low-cost clothing and household goods, vouchers for motels, food, gas, prescriptions, emergency medical help, and bus tickets. Now, 55 years later, our two stores provide full- and part-time employment to over sixty people. In addition, sales go directly to funding our numerous programs. It is very exciting to see the growth St. Vincent de Paul has experienced thanks to the generous support of individuals and businesses in our community!

Store Sales	1971	1981	1991	2001
Coeur d'Alene	\$50,728.04	\$134,027.36	\$615,019.21	\$737,717.94
Post Falls (opened in 1993)			\$40,039.21 (1993)	\$120,578.44

Women & Children's Emergency Shelter, Bottom Left

Men's Emergency Shelter & Social Service Office, Bottom Right



St. Vincent de Paul's growing commitment to "help others help themselves" is the idea behind our social service office, which started in 1988. We offer all types of assistance, information, and referrals geared toward teaching self-sufficiency. Homelessness became an issue during that time, and we became committed "to try and end the cycle of homelessness." In 1990 we purchased our first homeless shelter for men (which now also houses our social service office, and is funded in part by United Way), and have served more than 3,000 men with over 30,000 bed nights. Our second emergency shelter, for women and children, was opened in 1992 and we have served over 29,000 bed nights for 200 women and 1500 children.

# St. Vincent de Paul

## The Projects & Programs



In the mid 1990s we started offering transitional housing for those in need, with the belief that providing safe, longer-term, temporary housing while teaching self-sufficiency was key in breaking the cycle of poverty in people's lives. Currently, St. Vincent de Paul owns and manages 43 units of transitional housing in 4 facilities in CdA, Post Falls, and Wallace.

All of St. Vincent's transitional housing facilities work with families to determine how each individual can achieve success by offering:

- Life Skills Classes
- Parenting Classes
- Career Counseling
- On-Site Child Care
- Mentoring and Tutoring
- Substance Abuse Counseling
- Mental Health Counseling
- GED Classes



Coeur d'Alene Transitional Housing Center, Top Left

Kamps Transitional Housing in Post Falls, Left

St. Vincent's Star Haven Transitional Housing in Coeur d'Alene, Right



St. Vincent's Gateway Transitional Housing in Wallace, Above

All residents of St. Vincent de Paul's transitional housing facilities can stay up to 24 months. Residents must be drug/alcohol free, willing to submit to a criminal background check, and show they are motivated to becoming self-sufficient. Rent is based upon each resident's income. The Transitional Housing Center in Coeur d'Alene opened in 1994 with 16 units, and Kamps Transitional Housing, opened in 1999 with 4 units. These two facilities offer private apartments for families with children under the age of 18. St. Vincent's Gateway Transitional Housing opened this year in Wallace with 12 units for single men and women, as well as families. St. Vincent's Star Haven in Coeur d'Alene will open as transitional housing in the Spring of 2002 and follow the demographics of Gateway.

# St. Vincent de Paul

## The Projects & Programs



Meadowood Glen, Left &  
Meadowood Glen II, Below  
Both in Post Falls



Also, by the mid 1990s, St. Vincent de Paul's housing goal expanded to helping preserve affordable housing in the North Idaho area for low-income people. During this time, we have purchased, and currently manage, six different affordable housing facilities to serve seniors and families in three northern counties. We also manage another facility for

Lightning  
Creek in  
Clark Fork,  
Right



Golden Terrace in  
Plummer,  
Right



Leisure Living in  
Tensed,  
Below

seniors, Meadowood Glen II, through a written management agreement with HUD. Of the six facilities owned by St. Vincent, four of them are for seniors. All of St. Vincent de Paul's Senior Housing facilities have units with subsidized rents with medical expense factors so these tenants pay rent



based on their income. To be eligible for senior housing, the head of household must be at least 62 or disabled and fall within the income limits. These facilities are made possible with funding by HUD, Rural Development, and Idaho Housing and Finance Association.

At St. Vincent de Paul, we continue to be committed to providing and preserving affordable housing in North Idaho!

# St. Vincent de Paul

## The Projects & Programs



Vali-Vu, Left, and Kamps Apts., Right, both in Post Falls, offer a total of 22 units of affordable rental housing for low-income families (at or below 80% area median income). Some units are available with subsidized rent.



*Like a tree, always growing —  
Helping others help themselves*

### Other Programs offered by St. Vincent:

**Art on the Edge:** Offers all children ages 6-18 free classes and the materials they need to create art, allowing them the opportunity to experience the creative process. Funded in part by United Way.

**X-plor:** An after-school and summer program for middle-school students. X-plor combines fun with learning through many fun activities. Designed to build self-esteem and provide high-quality mentoring, this program helps youth connect with their potential.

**Child Care Food Program:** A U.S. Department of Agriculture program, we work with daycare providers to ensure they offer meals and snacks that provide the vitamins and minerals children need.

**Finally Home:** Prepares people for the joys, risks, and responsibilities of purchasing their first homes.

**Home Rescue:** Offers major home repairs between \$1,000 and \$20,000 for owner-occupied homes in Kootenai County under income guidelines.

**Legal Link:** A weekly clinic where local lawyers provide free legal consultations.

**Fashions for Your Future:** Gives job seekers the resources they need to get off on the right foot with a potential employer through a two-hour consultation. Each job seeker is furnished with a personal shopper, up to \$100 in free clothing, free cosmetics, and interview tips and career counseling.

**Career Counseling:** Teaches clients the skills they need to succeed in the world of work and become self-reliant. Offers both one-on-one counseling and work-readiness workshops, clients get insight into their skills and how they fit in the job market.

**Work Opportunity Sites:** Are unpaid, short-term, pre-employment work experiences. A self-reliance program that teaches and improves job skills and builds work history.

# St. Vincent de Paul

## The People



Holly Watson, St. Vincent's Bookkeeper, Above

Left to Right: Alma Moore, Monica Streeter, Rebecca Knight, Deanna Jeffres, Tanja Batchelder, & Aleta Forsberg,



*At Work & At Play*



Anita Trimble & Minnie McDonald, Above  
Coeur d'Alene Store

Beverly Hunter, Right  
Coeur d'Alene Store



Earl Koester,  
Assistant Manager  
Coeur d'Alene Store, Right



Bonnie Sullivan, Head Sorter, Left



Annie Van Valkinburg, Head Pricer, Be-

*Making A Difference In People's Lives*



Kathy Reed, Social Service Director, Above

Therese Misso, Social Service Office, Right



A special thanks to all the dedicated and caring staff of St. Vincent de Paul. Without you, we wouldn't be able to help those less fortunate in our community. Your hard work makes all the difference in our organization and in the lives of those we serve!



# St. Vincent de Paul

## The People

Folks having fun at Art on the Edge's Annual Mardi Gras Party!

Our Americorps VISTA Liz Beechler (6/00-6/01), (2nd from right), Below



Our Americorps VISTA, Ami Manning, and Social Service Director, Kathy Reed, Right



Our Americorps VISTA, Ami Manning, with child care workers, Lindsey Lohmiller & Stacy MacDonald, Above

Our Americorps VISTA, Kim Hite (6/01-6/02), Right



St. Vincent de Paul's St. Thomas Conference meets, Left



Ali Shute, Director of Art on the Edge, & Ali Hakala, Art on the Edge Program Coordinator, Left

### VISTAs and Community Volunteers:

We are pleased to have two volunteers granted to us from the Americorps VISTA program — for our 9th year! These volunteers serve a one- to two-year term helping establish the various programs we provide to the community. Their dedication and energy is inspiring!

Our community volunteers are truly special gifts to our organization as well. We exist and thrive because of their efforts. They continue to give their time and themselves so we may help others.

Generous volunteers Don Thorin, Left, and Joe Venkus team up to remodel the Men's Shelter, Below



Tenant at Leisure Living Senior Housing in rural Tensed, Below



*Thank you!*

# St. Vincent de Paul

## Statement of Financial Position

December 31, 2001

	<b>2001</b>	<b>2000</b>
<b>ASSETS</b>		
<b>CURRENT ASSETS:</b>		
Cash and cash equivalents	\$282,266	\$125,278
Investments		61,732
Inventory	180	3,240
Prepaid expenses	3,496	2,724
Cumulative overabsorbed indirect costs	11,367	
Accounts receivable:		
Grants	33,497	50,690
Employee advance	450	400
Other		2,620
Total current assets	<u>331,256</u>	<u>246,684</u>
<b>RESTRICTED DEPOSITS:</b>		
Reserve accounts	138,859	102,883
Security deposits	14,176	10,783
Total restricted assets	<u>153,035</u>	<u>113,666</u>
<b>LAND, BUILDING AND EQUIPMENT:</b>		
Land	474,262	371,775
Building	4,346,692	4,050,596
Construction in process		10,652
Loan fees	5,256	5,256
Equipment	295,125	295,125
	<u>5,121,335</u>	<u>4,733,404</u>
Less accumulated depreciation	(887,724)	(765,558)
Total land, building and equipment	<u>4,233,611</u>	<u>3,967,846</u>
 Total assets	 <u>\$4,717,902</u>	 <u>\$4,328,196</u>
<b>LIABILITIES AND NET ASSETS</b>		
<b>CURRENT LIABILITIES:</b>		
Accounts payable	\$21,674	\$23,436
Accrued liabilities	31,071	56,276
Cumulative overabsorbed indirect costs		5,132
Current portion of long-term debt	78,511	50,171
Total current liabilities	<u>131,256</u>	<u>135,015</u>
<b>RESTRICTED LIABILITIES:</b>		
Security deposits	14,176	10,783
<b>LONG-TERM DEBT, less current portion</b>		
Total liabilities	<u>3,561,251</u>	<u>3,351,811</u>
	<u>3,706,683</u>	<u>3,497,609</u>
<b>NET ASSETS:</b>		
Unrestricted	1,011,219	830,587
Total net assets	<u>1,011,219</u>	<u>830,587</u>
 Total liabilities and net assets	 <u>\$4,717,902</u>	 <u>\$4,328,196</u>

# St. Vincent de Paul

## Statement of Activities

For the Year Ended December 31, 2001

	<u>2001</u>	<u>2000</u>
<b>UNRESTRICTED NET ASSETS:</b>		
Support:		
Store sales	\$859,347	\$806,789
Less: cost of sales	(6,919)	(7,009)
Net sales	<u>852,428</u>	<u>799,780</u>
Businesses, estates and individual donations	225,659	70,525
Federal financial assistance	973,734	826,504
State financial assistance	170,691	172,722
Churches	10,347	11,075
Interest	8,993	7,782
Rental income	199,090	198,113
Fair market value CC	21,569	22,779
Management fees	23,088	25,512
Miscellaneous grants		11,309
Program income	38,306	35,116
Fundraising income		752
Miscellaneous	8,793	25,802
Total unrestricted support	<u>2,532,698</u>	<u>2,207,771</u>
Expenses:		
Program services:		
Social services	321,423	290,646
Kamps transitional housing	33,993	14,847
Transitional housing	207,808	198,674
Store	768,122	740,956
Childcare food program	342,623	322,941
Low income housing and development	426,930	435,877
Post Falls commercial	29,284	25,655
Housing programs	23,380	26,879
Special lodging	49,364	44,194
Star Motel transitional housing	14,676	
Supporting services:		
Management and general	150,962	137,351
Total expenses	<u>2,368,565</u>	<u>2,238,020</u>
<b>INCREASE (DECREASE) OF SUPPORT AND REVENUE OVER EXPENSES BEFORE UNDER (OVER) ABSORBED INDIRECT COSTS</b>	164,133	(30,249)
Under (over) absorbed indirect costs	<u>16,499</u>	<u>(5,044)</u>
<b>INCREASE (DECREASE) IN NET ASSETS</b>	180,632	(35,293)
<b>NET ASSETS, BEGINNING OF YEAR</b>	<u>830,587</u>	<u>865,880</u>
<b>NET ASSETS, END OF YEAR</b>	<u>\$1,011,219</u>	<u>\$830,587</u>

**St. Vincent de Paul cannot survive  
without community support.**

We encourage you to:

- ⇒ Shop in our stores.
- ⇒ Donate household goods, money, food, and clothing.
- ⇒ Share your time and talents as a volunteer.
- ⇒ Remember our clients when you speak with local and state policy makers.

St. Vincent de Paul believes in personal involvement with commitment without judgement or regard to race, nationality, or religious preference.

St. Vincent de Paul Thrift Store  
108 E. Walnut  
Coeur d'Alene, ID 83814  
208-664-3095

Post Falls Books and More Store  
210 W. Seltice  
Post Falls, ID 83854  
208-773-6836

If you or your group would like a tour of our facility, please call 664-3095 to arrange a date.